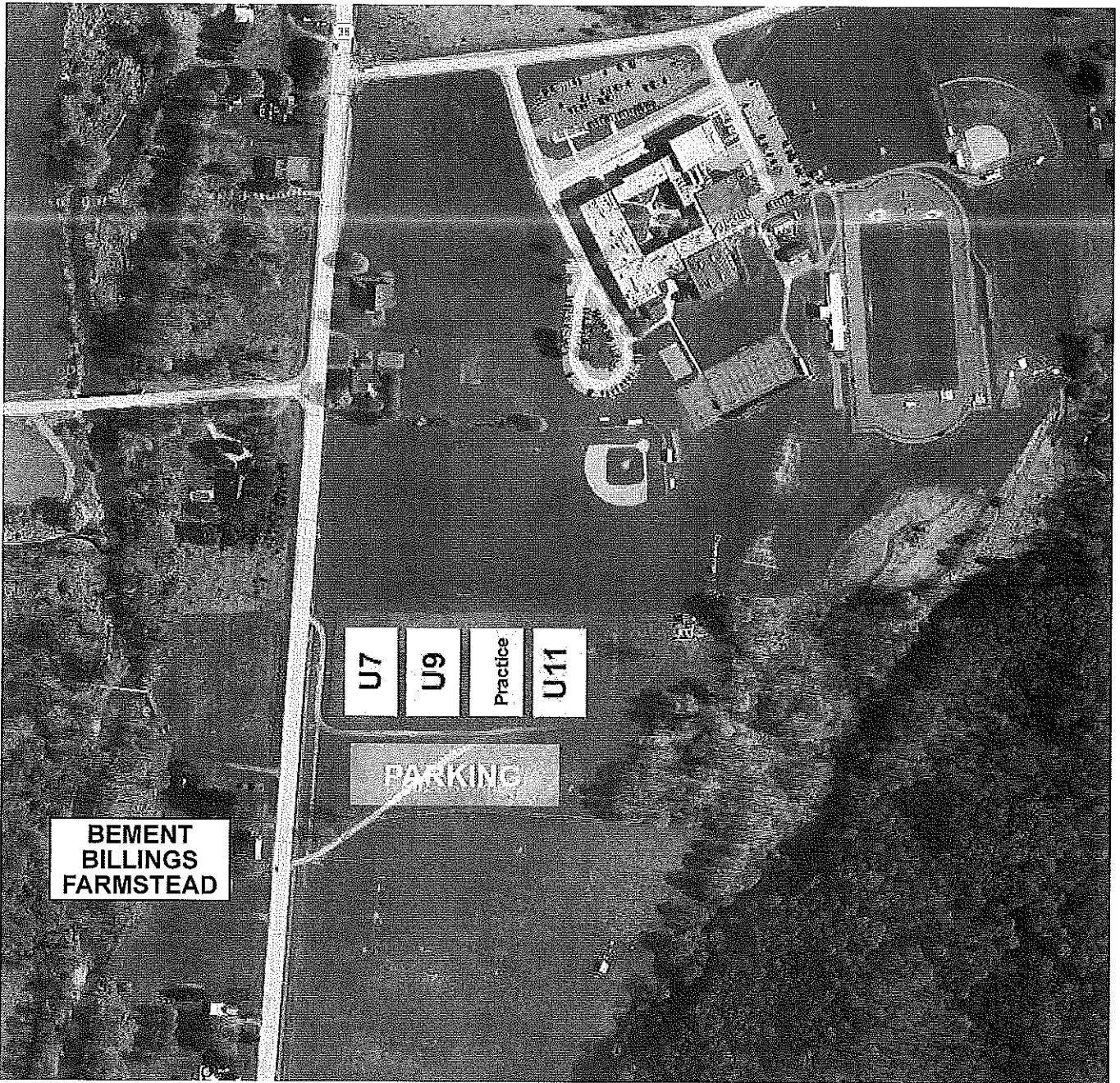


Newark Valley Fields



Driving North on 38:

The fields are located approximately 1 mile from downtown Newark Valley traffic lights on right hand side. Looks for the Farmstead Museum on your left. If you get to the traffic light for the entrance to Newark Valley High School you have just passed the fields.

Driving South on 38:

The fields will be on your left just after the traffic light for the entrance to Newark Valley High School.